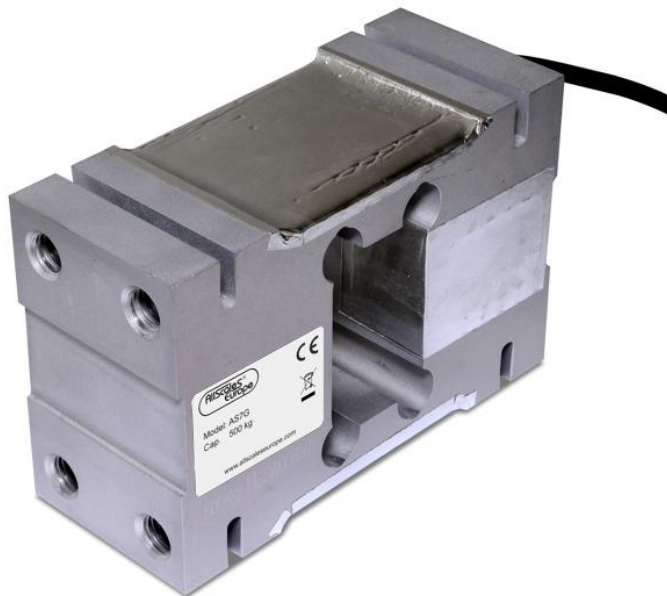


# AS7G single point load cell

Weighing capacities 500 ~ 1000 kg.  
Protection class IP65, precision class C3.

Made of colorless anodized aluminum alloy.  
Application: bench scales, floor scales, checkweighers, etc.



## Properties

- capacities: 500, 750 and 1000 kg
- protection class IP65
- precision class C3
- material: aluminium alloy, colorless anodized
- application: bench scales, floor scales, checkweighers, etc.
- maximum platform dimensions: 1200 x 1200 mm

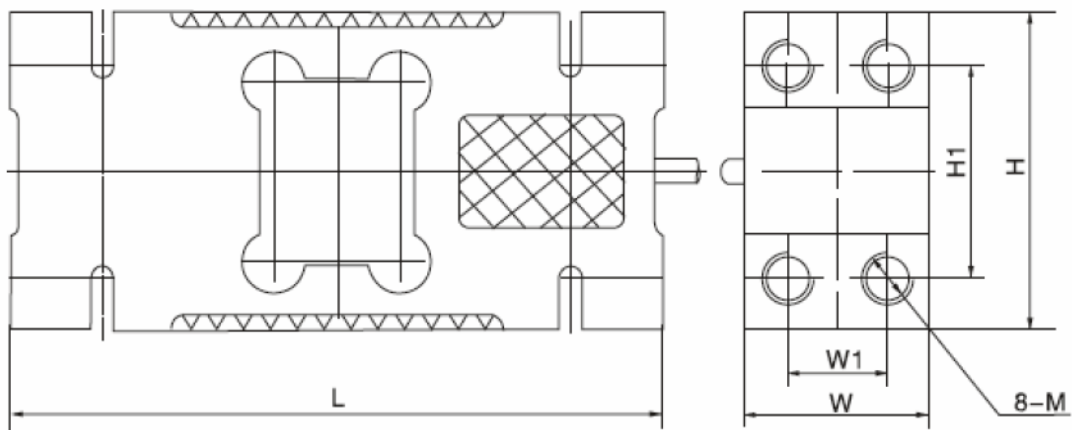
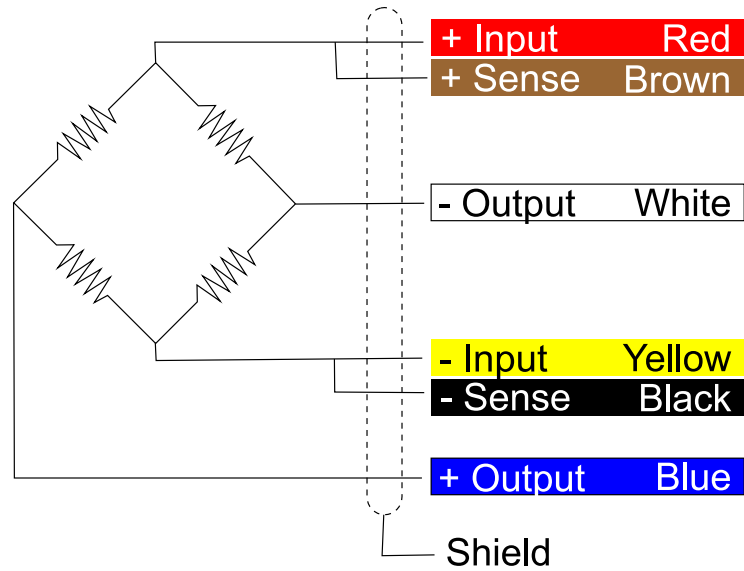
## Technical Data

PARAMETER	UNIT	VALUE	
Rated capacity (E <sup>max</sup> )	kg	500	750, 1000
Max. platform size	mm	600 x 800	1200 x 1200 mm
OIML Accuracy		See table below	
Sensitivity	mV/V	2.00 ± 0.2	
Maximum Number of Intervals		3000	
Minimum Y=E <sup>max</sup> /V <sup>min</sup>		7000	
Combined error	% FS	± 0.0200	
Minimum dead load	kg	0	
Safe overload	% of E <sup>max</sup>	150	
Ultimate overload	% of E <sup>max</sup>	300	
Zero balance of FS	%	< ± 2.0	
Nominal excitation	V	5 ~ 12	
Max. excitation	V	18	
Nominal temp. range	°C	-10 to +40	
Service temp. range	°C	-35 to +65	
Input impedance	Ω	406 ± 6	
Output impedance	Ω	350 ± 3	
Insulation resistance	M Ω	≥5000 ( 50VDC )	
Construction		Aluminum Alloy	
Protection class to EN 60529		IP 65	

Type	AS7G-500kg	AS7G-750kg	AS7G-1000kg
Capacity	500 kg	750 kg	1000 kg
OIML Accuracy	C3		



# AS7F single point load cell



Capacity ↓	Dimension (mm)					
	H	H1	L	W	W1	M
500 kg	95	70	146	60	36	M12-7H Depth 18
750 - 1000 kg	125	95	176	76	46	M16-7H Depth 20

