

AllScales SW-weighingsoftware for Windows

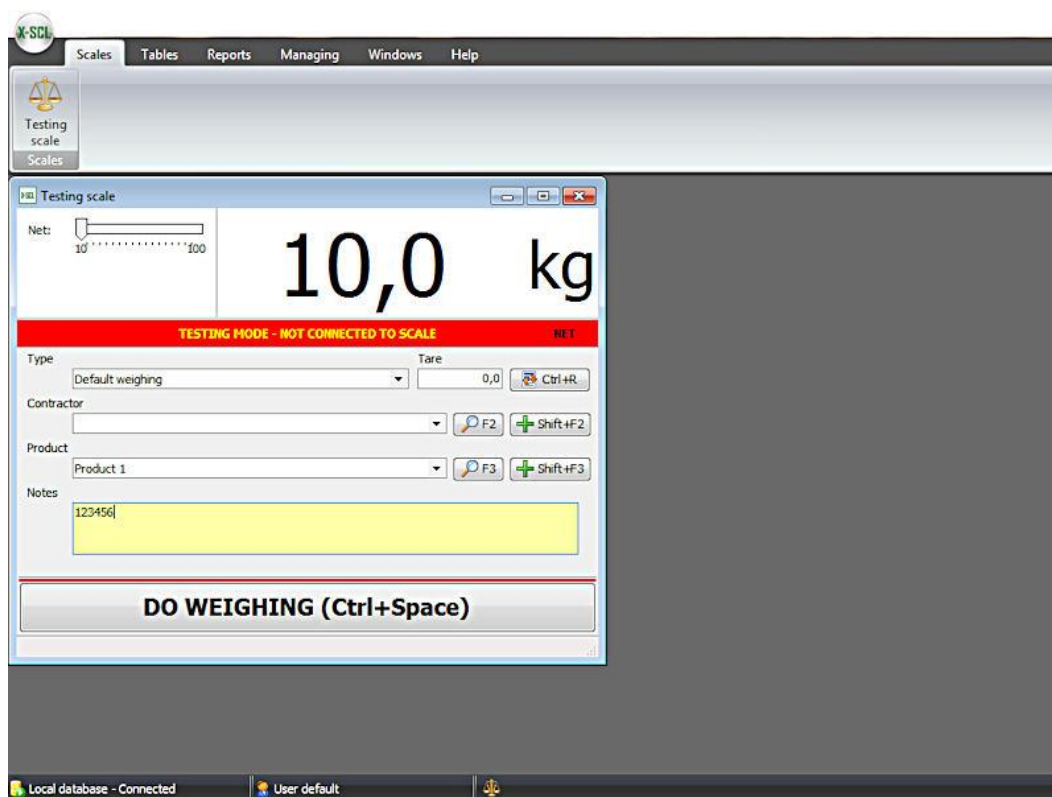
Weighing software for (real time) communication with a PC, in combination with ALLSCALES weighing equipment (for linking to multiple scales).

Features AllScales SW-weighing software

- Suitable for linking to multiple scales, a license must be purchased per scale
- Link to SQL server
- Advanced options for building a database structure, enabling a smooth information management
- User-friendly interface
- Easily export data to for example Excel (*.CSV files)
- Ability to take photos via analog and IP cameras
- Extensive reporting options
- Setting options for managing user rights
- Language: Dutch and English.

Minimum System requirements PC

- i3 processor or equivalent - 4 GB Ram memory
- 200 MB of free memory on the hard disk
- Operating system Windows 10 Professional (32/64 bit)
- - An RS-232 serial port, Ethernet or USB (for indicators with USB port)



Details

Name	Value
Informations	
Weighing nbr:	2/2017
Weighing date:	22-8-2017 11:40
Operator:	User default
Scale:	Testing scale
Weighing type:	Default weighing
Gross:	15,0 kg
Manual tare:	0,0 kg
Net:	15,0 kg
Attributes	
Contractor:	
Product:	1, Product 1
Notes:	

Weighing number	Date	Operator	Scale	Weighing type	Gross	Tare	Net
2/2017	22-8-2017 11:40:42	User default	Testing scale	Default weighin	15,0	0,0	15,0
1/2017	22-8-2017 11:39:15	User default	Testing scale	Default weighin	10,0	0,0	10,0

Report creator - Step 1 of 3

Templates: [Dropdown menu]

Date range:

- Current day
- Current month
- Selected date: 22-8-2017
- Date range: 22-8-2017 0:00:00 to 22-8-2017 23:59:59

Weighing criteria:

Scale: [Dropdown menu]

Weighing type: [Dropdown menu]

Buttons: Forward, Cancel



The screenshot shows the 'Managing' menu with options: Users, Dictionaries, Access rights, Elements types, Weighings types, Series of measurement, Settings, and Color. Below it is the 'Users' window with a table of users.

Lastname	Firstname	Active	Login	Password
Filtering				
User	basic	<input checked="" type="checkbox"/>	Standard	*****
User	default	<input checked="" type="checkbox"/>	xscale	*****

The screenshot displays three silo weighing stations (Silo 1, Silo 2, Silo 3) under the 'Weegschalen' (Weighing Scales) section. Silo 1 shows a weight of 26,5 kg. Silo 2 and Silo 3 show '--- kg'. A blue box highlights the silo selection icons, and blue lines connect them to the respective silo windows. Each window has a 'Start weging (contr+spatie)' button at the bottom.

