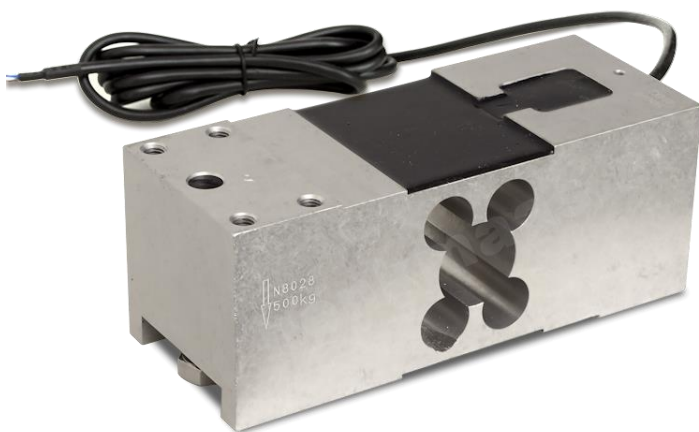


Single Point Load Cell model LA490-F

High performance high capacity single point load cell designed for direct mounting of large weighing platforms.

The rugged construction provides high immunity to side forces, making it suitable for a wide range of weighing applications including bench scales, checkweighing and process weighing.

The two additional sense wires feed back the voltage reaching the load cell. Full compensation for change in the resistance of the lead wires due to temperature change and / or cable extension is achieved by feeding this voltage to the appropriate electronics.



Properties

- CE-verifiable
- capacities: 50, 75, 100, 150, 200, 250, 300, 500 kg
- anodised aluminium construction
- protection class IP 66
- accuracy class C3
- for weighing platforms up to and included 600 x 600 mm
- can be used as a replacement for type 1252

Technical Data

PARAMETER	UNIT	VALUE
OIML Accuracy		C3
Rated capacity (E ^{max})	kg	50, 75, 100, 150, 200, 250, 300, 500
Sensitivity	mV/V	2.00
Sensitivity tolerance	± mV/V	0.20
Zero balance	± mV/V	0.10
Maximum Number of Intervals		3000
Y=E ^{max} /V ^{min}	Minimum	10000
Z=E ^{max} /(2*DR)	Minimum	3000
Eccentric loading error	±%/cm	0.0042
Maximum platform size	cm	60x60
Nominal temperature range	°C	-10 to +40
Service temperature range	°C	-30 to +70
Limit load	% of R.C.	150
Break load	% of R.C.	300
Nominal excitation	V	10
Max. excitation	V	15
Input impedance	Ohm	406 ± 15
Output impedance	Ohm	350 ± 3
Insulation resistance	MOhm	>2000
Compensation circuit type		Balanced Bridge
Cable length	Meter	2.0
Cable type		6x26 AWG, Black PVC Jacket
Color code		+exc: green, +sense: blue, +sig: red, -sig: white, -sen: brown, -exc: black
Construction		Anodised Aluminum Alloy
Protection class to IEC529		IP 66

Type	LA490-F-50kg	LA490-F-75kg	LA490-F-100kg	LA490-F-150kg	LA490-F-200kg	LA490-F-250kg	LA490-F-300kg	LA490-F-500kg
Capacity	50 kg	75 kg	100 kg	150 kg	200 kg	250 kg	300 kg	500 kg



